



UI Health's Hospital & Clinics ROUNDUP

Clinical Decision Unit

On February 18, UI Health held a ribbon cutting for the new Clinical Decision Unit, a centralized location to care for patients who do not meet criteria for inpatient admission but are not well enough to go home without further evaluation, what we call “observation” status.

HEADLINES

CORRECTION The February Roundup incorrectly stated Net Patient Revenue figures for the Patient Revenue organizational goal. The correct figures are below:



PATIENT REVENUE (AS OF JANUARY 2016)

Inpatient and outpatient revenues received for services

Decrease the amount of denied bills

Current: 3.7%

Goal: 2%

Net Patient Revenue

Current: \$347 million

Goal: \$343 million

*1.2% Favorable to Budget

KRA UPDATE This year's Employee Evaluations/KRAs process has changed. The Employee KRA Performance Evaluation will now be completed through, and stored in, the Learning Management System/Talent Management System (LMS/TMS). There will be an LMS training module on how to complete the online KRA available in April. The automated Employee KRA Performance Evaluation will be available for manager/supervisor input starting Monday, May 2. Information on the training and resources will be communicated via the UI Health intranet home page and your manager.

Direct any questions to uihkra@uic.edu.

KRA 
Key Results Area

HAVE A STORY SUGGESTION?

Email us with subject line

ROUNDUP to UIHealthMktg@uic.edu

HEADLINES

HEALTH SCIENCE COLLEGES AT UI HEALTH RECOGNIZED NATIONALLY The University of Illinois Hospital & Health Sciences System was well represented on the 2017 U.S. News & World Report Best Graduate School Rankings, with several health science programs receiving national recognition in the long-running guide.

- College of Pharmacy — 6th
- Occupational Therapy — 4th
- Physical Therapy — 16th
- Nursing-Midwifery — 10th
- Nurse Practitioner, Family — 7th
- Nurse Practitioner, Gerontology — 10th
- Nurse Practitioner, Pediatric — 12th
- Nurse Practitioner, Psychiatric — 13th
- Nursing Administration — 8th

Congratulations to the UIC College of Pharmacy, College of Nursing, and College of Applied Health Sciences.



UIC College of Pharmacy

UPCOMING EVENTS

APRIL 2016

Su Mo Tu We Th Fr Sa

					1	2
3	4	5	6	7	8	9
April 3 - 10 National Healthcare Access Personnel Week >> April 3 - 10 • Health Information Professionals Week >>						
10	11	National Radiology Nurses Day	13	14	15	16
April 11 - 15 • National Cancer Registrars Week >>						
April 10 - 16 National Healthcare Volunteer Week >>						
17	18	19	20	21	22	23
	★	April 19 - 25 Occupational Health Nursing Week >>				
24	25	Administrative Professional Day	27	28	29	30
April 25 - 29 National Patient Experience Week >> April 25 - 30 Laboratory Professionals Week >>						

Physical Wellness Month

Occupational Therapy Month

★ **April 18, Noon - 1pm**
Risk Management & Patient Safety Grand Rounds
It Really Happens Here: Sharps Injuries

UI HEALTH RESEARCH HELPS EXPAND MEDICARE COVERAGE FOR SICKLE CELL PATIENTS

UI Health research helped influence a recent CMS decision to expand Medicare coverage to include therapies like bone marrow transplantation (BMT) to treat specific blood disorders, including sickle cell disease and myelofibrosis, a type of blood cancer that is otherwise incurable. Dr. Damiano Rondelli, chief of the division of Hematology/Oncology at UI Health, made an appeal to CMS for expanding coverage, and his research is cited in the center's decision memo. Dr. Rondelli is excited his work will have an impact on many patients. "The lack of coverage for proven curative therapies has prevented patients from receiving procedures that can improve their lives," he says. "The Medicare expansion will help provide a cure to more patients with debilitating diseases like sickle cell or myelofibrosis."

This is great news for UI Health. Our sickle cell program is the largest in the Midwest, and we've successfully cured 13 people of sickle cell with BMT. Medicare coverage is expected to go in place this summer.

RN & APN LICENSE RENEWAL DETAILS The Illinois Department of Professional Regulation (IDFPR) at the State of Illinois is responsible for the professional licensure of registered nurses, licensed practical nurses and advanced practice nurses for the state. This year, due to the state's current budget crisis, the IDFPR is not following the typical notification process for licensure renewal. Licenses for Registered Nurses and Advanced Practice Nurses will still expire on May 31, 2016, and clinicians need to have a valid license at all times.

Important things to note:

- There will be NO postcard renewal notices sent via the U.S. mail.
- The state will allow renewals to be done online at IDFPR.com. IDFPR needs to reflect the renewal by midnight on May 31.
- Anyone with an RN license will need to renew regardless of their department.



PURCHASE discounted Corner Kick tickets for Chicago Fire's 2016 season at www.chicago-fire.com/uihealth

Chicago Fire Corner Kick tickets, regularly priced at \$32, are available for \$22 for employees.

DID YOU KNOW?

NEWS FROM AROUND UI HEALTH

Regardless of your position within UI Health, each of us plays a critically important role in helping to succeed in our mission while putting our patients first. UI CARE behavioral standards describe a way of working, a way of interacting, and a way of thinking about our jobs as we work together with others. All employees, leaders, providers, and volunteers will be responsible for upholding these behavior standards and using them as a tool to measure the level of service that we are providing with each and every patient or customer encounter.

The UI CARE Blitz training is currently underway to ensure all employees are up to date on knowing the UI CARE behavioral standards. If you have not yet had a chance to attend this training, please talk with your manager today! If you have questions, please email uihod@uic.edu.

The logo for UI CARE features a stylized white icon of a cross with horizontal bars on the left, followed by the text "UI CARE" in a clean, white, sans-serif font.

Thank you to Starlight Children's Foundation and Northwestern University Dance Marathon for our newly remodeled playroom at Children's Hospital University of Illinois! The kid-friendly space got new paint, furniture, lighting, and cabinets, plus modern amenities like a state-of-the-art gaming system, built-in dollhouse, Lego wall, and a specially design infant area. The playroom is designed and equipped to stir the imagination, ease stress, and assist in healing for kids and teens experiencing long hospital stays.

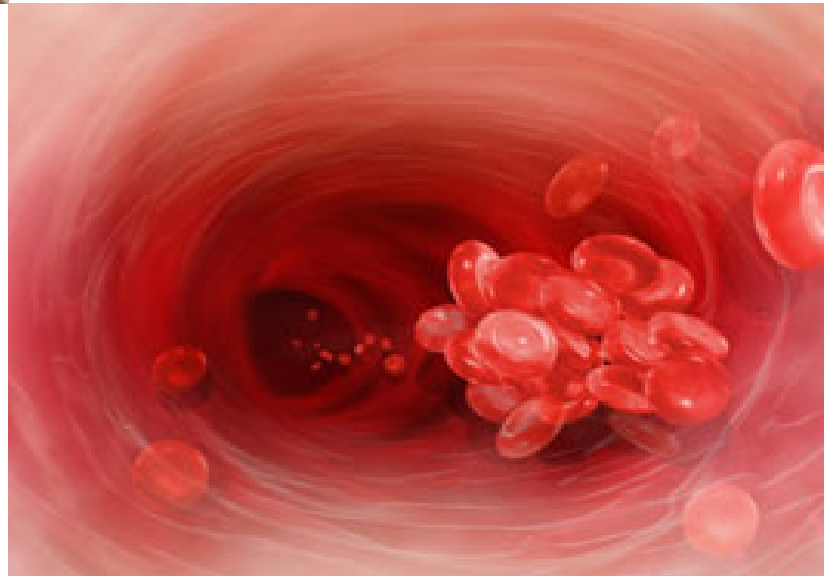
Blood clots to the lungs or large blood vessels are the leading cause of preventable hospital death. These blood clots are one of the kinds of harm that UI Health's Zero Harm Initiative is working to prevent.

What are we doing to prevent blood clots?

Teaching patients why it is important to:

- Wear clot-preventing machines while in bed.
- Take clot-preventing medicine as ordered.
- Move legs at least every hour.

Implementing a clot-prevention order set in Cerner.
Getting patients moving earlier.





Effective April 4, 2016, the Family Medicine Center in the OCC is moving to the Family Medicine Center at University Village at 720 W. Maxwell St. We are working to make the move as seamless as possible. We will maintain the same convenient hours and continue to offer same-day appointments for urgent health needs.

We are thrilled to announce that the UI Health Center for Breast Care has achieved accreditation by the National Accreditation Program for Breast Centers (NAPBC), part of the American College of Surgeons.

NAPBC accreditation provides value across all domains of care, including:

- Access to care and service
- Patient satisfaction and well-being
- Quality of cancer care

[Congratulations to the Breast Care team!](#)



March is Colon Cancer Awareness month. Members of the GI team had lobby days in the hospital and OCC March 15-17 to distribute educational material and blue ribbon pins.

FIT FLEX OF THE MONTH

HOW DO YOU STAY HEALTHY?



"I stay physically active by playing with my kids. I also choose to park far away from an entrance of a building so that I can get a few more steps in each day."

Joel Ayamolowo,
Staff Nurse 1,
5W Pediatrics



"My exercise of choice is yoga. It not only helps me stay physically strong, but it is also great for my mental and emotional well-being."

Noelle Sojka,
Assistant Director,
HR Compliance, HRIS and
Access Control

RIISING STARS: FEBRUARY 2016

CARE Winners

Marla Barkoff, MD - Endocrinology
Eve Baron, PT - Physical Therapy
Conner Vinikoor, DDS - Pediatric Dentistry

CARE Award is given to those employees who have demonstrated the UI CARE standards of behavior and have gone out of their way to help a patient, staff member, or visitor.

Daisy Award

The DAISY (Diseases Attacking the Immune System) Foundation was founded in 1999 to recognize the skillful and amazingly compassionate care that nurses provide for patients and their families every day.

To nominate an extraordinary nurse, visit hospital.uillinois.edu

UI CARE BEHAVIORS

Compassion

- Talk, Listen, and Learn
- Manage Up

Accountability

- Support Accountability and Teamwork
- Make People Feel Welcome

Respect

- Put the Patient First
- Maintain Appearance, Courtesy, and Environment

Excellence

- Reward and Recognize
- Create a Sense of Ownership and Pride

WELCOME TO UI HEALTH

NEW HIRES FOR FEBRUARY 2016

Al-Talla, Alaa	7W Organ Transplant	Lopez, Christine	Clinical Practice & Professional Development
Albanese, John	Food and Cafeteria Services	Lopez, Xenia	Surgery
Alqadi, Murad	Hospital Emergency Services	Lukose, Anoop	Labs/Pathology Services
Barker, Kevin	Food & Cafeteria Services	Lux, Rachel	Occupational Therapy
Barnes, Tasheanna	Neonatal ICU	Magsino, Regina	Office of the Chief Health Information Officer
Barrientos, Jessica	Clinical Decision Unit	Manrique, Patrick	Physical Therapy
Barry, Bridgette	Physical Therapy	Martine, John	Ambulatory Services Admin.
Bekoe, Osei	COM Pediatrics	Metzler, Bran-Dea	Occupational Therapy
Bessler, Lauren	6W ICU	Meyer, Megan	6W Step Down
Bhandari, Vipul	Women's & Children's	Mikell, Sharlette	Patient Access
Blackman, Sharon	Food and Cafeteria Services	Mohan, Ashlie	Emergency Services
Bolden, David	COM Pediatrics	Moy, Vicki	Clinical Decision Unit
Bonds, Dernice	Nursing Resource Office	Muhammad, Emanuel	Facilities Management Admin.
Brouch, Kristin	Occupational Therapy	Muzyka, Luke	Hospital Medical ICU
Camit, Donna	Clinical Decision Unit	Nevarez Rocha, Alejandro	8W Bone Marrow Transplant
Carter, Tia	Ambulatory Services Admin.	North, Robert	Environmental, Health, and Safety Office
Ciruelas, Katherine	COM Pediatrics	Norwick, Maria	Ambulatory Services
Cobb, Angela	GI Endoscopy Lab	Okojie, Joan	Clinical Decision Unit
Cooper, Marquita	Health Information Management	Okubo, Mitsuru	Pastoral Care
Cowin, Ashia	Patient Access	Oladele, Jimoh	8E Adult Psychiatry
Davis, Alexandria	8E Adolescent Psychiatry	Ortiz, Camille	Ophthalmology Center
Diaz Jr., Carlos L	Radiology	Owens, Novella	Mile Square
Doran, Daniel	8E Adult Psychiatry	Rau, Lynn	Surgical Services (Surgicenter)
Doyle, Janet	Occupational Therapy	Santana, Johnny	Anesthesiology
Doyle, Katherine	Managed Care	Saret, Adelina	Surgical Services (Surgicenter)
Edionwene, Uwayeme	8E Adult Psychiatry	Sargent, Meredith	Clinical Nutrition
Edomwonyi, Uwadia	Materials Management	Sayson, Aldie	7W Organ Transplant
Edwards, Ronisha	Pediatrics	Schulte, Tim	Marketing
Ewaida, Nader	Pulmonary & Critical Care - Sleep Medicine	Schultz, Lauren	Labor & Delivery
Farooqui, Rahmaan	Radiology	Scislicka, Urszula	Clinical Decision Unit
Feehan, Sharon	Transplant	Scott, Donita	GI Endoscopy Lab
Fernandez, Claremont	Short Stay Unit	Sebastian, Renimole	GI Endoscopy Lab
French, Patricia	UM/DC Planning	Seledon, Edgar	Excellence & Experience Office
Friend, Tashi	GI Endoscopy Lab	Shaw, Lytasha	Food and Cafeteria Services
Fudacz, Katie	7W Organ Transplant	Shchurevich, Lou	Emergency Services
Gebrekristos, Tegist	Labor & Delivery	Sierra, Moniquita	Surgical Service (Surgicenter)
Gogoling, Josephine	NICU	Slota, Anna	Clinical Decision Unit
Goldenberg, Sarah	Physical Therapy	Smith, Chinetta	8E Adult Psychiatry
Grillo, Teresa	Dialysis	Smothers, Desmond	COM Pediatrics
Guzzo, Clare	Ophthalmology	Solis, Maritess	5E Sickle Cell Care Center
Harris, Kyanna	Facilities Management Admin.	Staley, Angela	Managed Care
Hasan, Abida MD	OB/GYN	Swiat, Kimberly	Short Stay Unit
Hogan, Atina	Ambulatory Services Admin.	Thomas, Jestine	Facilities Management Admin.
Holland, Kenneth	COM Pediatrics	Thomas, Nithin	Pharmacy Practice/Hospital Pharmacy
Hong, Hyesun	8W Oncology	Viola, Katherine	Clinical Nutritionist
Hunter, Tyrece	Graduate Medical Education	Yahuaca Gonzalez, Jazmin	Nutrition and Wellness
Ismail, Hala	Clinical Decision Unit	Zuckerman, Laura	Hematology/Oncology
Janostak, Elizabeth	Clinical Decision Unit	Zuniga, Mireya	Ambulatory Services
Jones, Henrietta	Mile Square Health Center		
Joseph, Jennifer	Labor & Delivery		
Kelley, Doneya	Ambulatory Services Admin.		
Kim, Michael	Respiratory Services		
Ladanyi, Andras	OB/GYN		

SAY:

University of Illinois Hospital & Health Sciences System

Now say it five times fast! It's a tongue twister, right?

Well, we listened, and we are updating our brand with the UI Health name. We also joined brand forces with UIC. Our new logo better illustrates two institutions collaborating to provide world-class healthcare, medical education, and research.

For more information about UI Health, visit

hospital.uillinois.edu/about

And to download the new logos, visit

hospital.uillinois.edu/marketing

