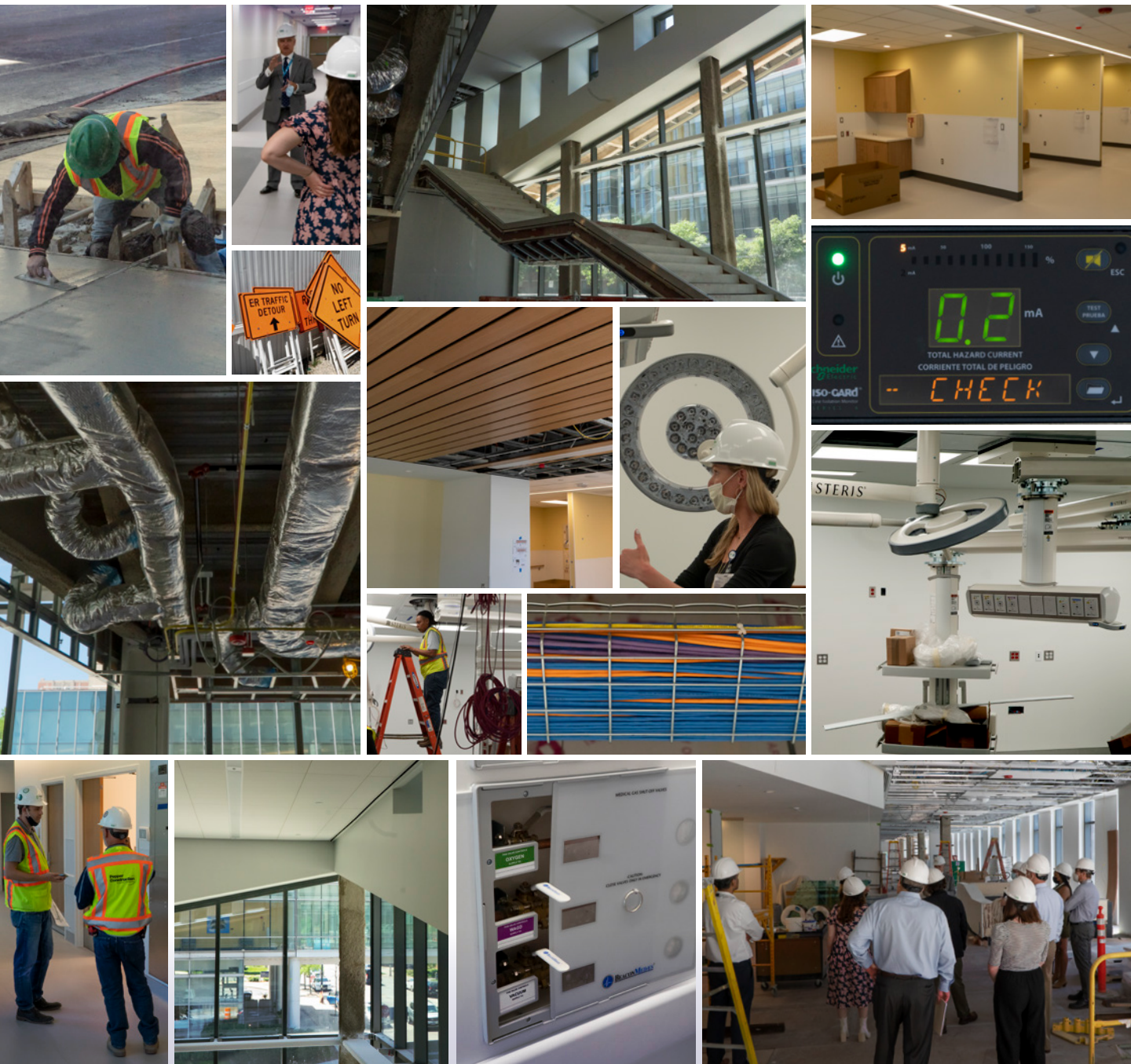


# ROUNDUP

Hospital & Clinics | June 2022

## Specialty Care Building: The Homestretch to Opening



## Specialty Care Building: The Homestretch to Opening

### We're Just Three Months Away!

Opening in September, the new UI Health Specialty Care Building (SCB) will accommodate the growth in outpatient surgery cases and provide comprehensive outpatient care among a diverse patient, faculty, and staff population at UI Health. The nearly 200,000-square-foot facility will be configured into six floors of patient care space, including the Bruno & Sallie Pasquinelli Outpatient Surgery Center and the relocation of five specialty clinics.

surgeries annually, and more than 8,300 gastroenterology (GI) procedures a year.

### Building a Better Experience for Our Patients

The new state-of-the-art facility also will include new technology and functionality for an improved patient experience:

- **Check-in Kiosks:** New registration processes will help patients more efficiently sign in using their MyChart app or in-person.



The SCB will provide a new home for outpatient surgery procedures now performed within the University of Illinois Hospital operating suite, opening needed space for improvements and expansion of the existing inpatient surgery department.

The SCB is projected to host 200,000 patient visits per year, more than 8,200

- **Wayfinding:** The building is uniquely designed to aid in natural wayfinding to clinic spaces.
- **Dedicated waiting areas:** Patients will be directed to wait in designated areas associated near their clinic.
- **Greeters:** New

staff who are dedicated to guiding patients before and after their appointments.

- **Valet parking:** This service will be highly encouraged for patients to use to help aid in wayfinding.

(continued next page)

## Specialty Care Building (continued)

### About the Bruno & Sallie Pasquinelli Outpatient Surgery Center

The new Bruno & Sallie Pasquinelli Outpatient Surgery Center will feature space for perioperative services, general and same-day outpatient surgery, and an anesthesia clinic.

- Eight surgical operating rooms
- 24 pre-/post PACU bays will be provided, with enclosed bridge connection to the Hospital surgery suite

### About the Specialty Care Clinics

The Specialty Care Building also will be home to the relocation of multiple specialty clinics, including:

- Ophthalmology
- Otolaryngology/ENT
- Transplant Services
- Gastroenterology & GI Lab
- Pharmacy
- Imaging

Three outpatient clinics – Ophthalmology, Otolaryngology, Transplant – currently residing in the Eye & Ear Infirmary (EEI) will relocate to the SCB, clearing the way for future development of the current EEI site. The SCB also will consolidate the Urology clinics from Mile Square–Main and the Outpatient Care Center (OCC).

The GI Lab with eight procedure rooms, six exam rooms, and 24 pre-/post-operative rooms will be developed in the new building. This will provide a new home for outpatient GI procedures now performed within the Hospital, opening needed space for improvements and expansion of the existing inpatient GI services. The College of Pharmacy also will provide outpatient pharmacy and compounding services in the new building to provide a convenient way for patients to pick up their prescriptions post-procedure. ■

### Specialty Care Building Space Allocations

LEVEL	AREA	FUNCTION
Basement	12,691 sf	Mechanical equipment, DOC
First Floor	24,737 sf	Lobby, Imaging, Pharmacy, Check-in, Receiving
Second Floor	30,640 sf	Check-in, SPD; Transplant, Urology, Anesthesia, & Pre-Operative Evaluation Clinics
Third Floor	30,640 sf	Bruno & Sallie Pasquinelli Outpatient Surgery Center
Fourth Floor	30,640 sf	Gastroenterology Clinic, Multi-Specialty Procedure Suite
Fifth Floor	30,835 sf	Illinois Eye & Ear: Ophthalmology Clinic
Sixth Floor	30,835 sf	Illinois Eye & Ear: Ophthalmology and Otolaryngology Clinic
Penthouse	8,000 sf	Mechanical equipment, elevator machine rooms
<b>Est. Total Square Ft.</b>	<b>199,018 sf</b>	



## MIKE'S CORNER

### Progress to Celebrate this Summer

The beginning of summer brings much to look forward to — warm weather, activities with family and friends, and hopefully some well-earned time away from work for us all.

This June, though, it is worth pausing to reflect on the progress around us that is the result of our organization's commitment and focus over the past several years.

This month, we have celebrated LGBTQ+ Pride Month by sharing staff spotlights and listening to how they honor and serve as advocates for the LGBTQ+ community. Celebrating the many unique cultures and heritages that make up our staff and our communities has been a point of focus for our organization this year. Last year, we created the Office of Diversity & Community Health Equity as a new area for innovations and initiatives that support diversity, equity, inclusion, and belonging at our health system — for our patients, for our communities, and for our staff. In addition to leading our cultural and heritage celebration months, that team, led by its chief Rani Morrison, is supporting strategic diversity initiatives throughout our organization, such as improving our race, ethnicity, and preferred language

data capture in Epic; reviewing and updating hospital policies and procedures with an equity focus; and supporting numerous initiatives aimed at ensuring our staff at all levels reflect the communities we serve.

We also recently commemorated the Juneteenth holiday, memorializing the emancipation of enslaved people in the United States. Juneteenth reminds us that part of our work to increase diversity, equity, inclusion, and belonging at UI Health is acknowledging the inequities of our past and working to eliminate injustices that remain in society today.

These changes at our organization are significant and notable because they are part of how we have refocused and recommitted our actions to being a more diverse, inclusive, and equitable health system — as providers of care, and as an employer. However, feedback from our recent Engagement Survey points to areas within our work environment at UI Health where inequities persist. We must continue to work to improve diversity, inclusivity, equity, and belonging at our organization.

But our biggest achievement of note, literal and figurative, is the Specialty Care Building (SCB). We're just three months away from opening this new, 200,000-square foot, state-of-the-art facility that will help us provide more and better care to our patients and communities. It truly has taken the work and sacrifice of us all to get here. With our collective focus and determination, we have made the operational and clinical adjustments

(continued next page)

## Mike's Corner (continued)

needed to bring online a new, cutting-edge care space. The new expansions to the SCB also will help us better utilize our existing clinical areas. It will benefit everyone — especially our patients.

And although I am proud of these accomplishments, and this is incredible momentum, I would be remiss if I didn't acknowledge the areas in which we still strive to improve. Next month, you will see an invite for an Active Intruder & Safety Town Hall. This issue is top of mind

and an obvious concern for all; thank you to those who have brought valuable input to this issue thus far. In July, we'll introduce the FY23 Goals & Initiatives and share information on Quality & Safety Transformation. Although these are challenges now, they are opportunities for our future.

Thank you all for your continued efforts. I hope all of you share with me the feeling of pride when you say that you are part of UI Health. ■



### **SPECIALTY CARE BUILDING** A NEW HOME FOR STATE-OF-THE-ART CARE

EYE CARE . EAR, NOSE, THROAT . GASTROENTEROLOGY . IMAGING  
PHARMACY . SAME-DAY SURGERY . TRANSPLANT . UROLOGY



Learn more  
[SCB.UIHealth.Care](https://SCB.UIHealth.Care)

ENGAGEMENT

## Celebrating LGBTQ+ Pride Month!

Inclusion is one of our core values at UI Health. This June, join us in celebrating Pride Month – observed each year in commemoration of the 1969 Stonewall Uprising.

Join us in recognizing and celebrating Pride Month by hearing from staff LGBTQ+ advocates, learning about our inclusive care practices, and celebrating the people that help create diverse, inclusive organizations like UI Health. **Learn more at [Celebrate.UIHealth.Care](https://Celebrate.UIHealth.Care).** ■



## Commemorating Juneteenth

Juneteenth memorializes the emancipation of enslaved people in the United States. Though the Emancipation Proclamation in 1863 freed enslaved people in the United States, **it was not until June 19, 1865, after the end of the Civil War, that news of the Proclamation was delivered to the residents of Texas.** In 2021, Juneteenth was named both an Illinois state holiday and a federal holiday.

This year was the first observance of the Juneteenth holiday for the University of Illinois System. This annual observance of this historic day will provide us with an opportunity for celebration and continued engagement and conversation toward eradicating racism and encouraging social equity.

UI Health is proud to honor the Juneteenth holiday and continue our celebrations of the cultures and heritages represented by our communities, providers, and staff. ■



A Juneteenth celebration in Texas, 1880.



A Juneteenth flag, designed by Ben Haith in 1997

## ENGAGEMENT

### New Campaign: UI Health ‘Building a Healthier Future for You’

UI Health’s expanding clinical footprint and community and patient commitment are featured in a new brand campaign running throughout Chicago.

A 30-second commercial (broadcast and digital television and radio) highlights how UI Health is “building a healthier future for you,” including:

- Our focus on [diverse, inclusive care teams](#) to strengthen the bond we have with our patients and communities.
- Our mission to advance healthcare for everyone by increasing access to clinics throughout Chicago, including our new clinic at [55th & Pulaski](#) and our new [Specialty Care Building](#) that will open this fall in the Illinois Medical District.

In neighborhoods like [Pilsen](#) and [West Elsdon/Gage Park](#), out-of-home advertising highlights how UI Health



clinics in those areas provide “expert care close to home”; in areas like the Medical District, the Specialty Care Building and new [Hospital Welcome Atrium](#) are showcased as ways UI Health is “building a better experience for you.”

Keep an eye out for all of our ads — in English and Spanish — on billboards, the CTA, and where you charge your electric vehicle, and you can catch our commercial where you view or stream TV or radio, or on our [YouTube channel](#). ■



## ENGAGEMENT



Practitioner Engagement Survey. All employees are welcome to join. A zoom link will be available on the intranet in the coming weeks.

**Employee Findings Town Hall to review findings:**  
July 7 at 12pm

**Practitioner Findings Town Hall to review findings:**  
July 11 at 12pm ■

## Save the Dates! Employee & Practitioner Engagement Survey Town Halls

Leadership will hold two town halls to share results from the Employee &

## ENGAGEMENT

## New Saliva Testing Location: AOB Room B11

As of June 3, all asymptomatic employee saliva testing will take place in Room B11 of the Administrative Office Building (AOB) concourse, located at 1737 W. Polk St. AOB Room B11 can be accessed via the tunnel and is located just down the hall from College of Pharmacy B8. Walk-ins are welcome.

**Saliva Testing also remains available in Student Center West Room 213.**

### SCW Room 213 Testing

Monday-Friday: 9 am - 4:45 pm

Saturday: 9 am - 12:45 pm

For more information, please visit the "Testing and Return to Work" intranet tile. ■

## UPDATED ASYMPTOMATIC SALIVA TESTING LOCATION

**As of June 3, all asymptomatic employee saliva testing will be in B11, located in the AOB concourse. Walk-ins welcome.**

