

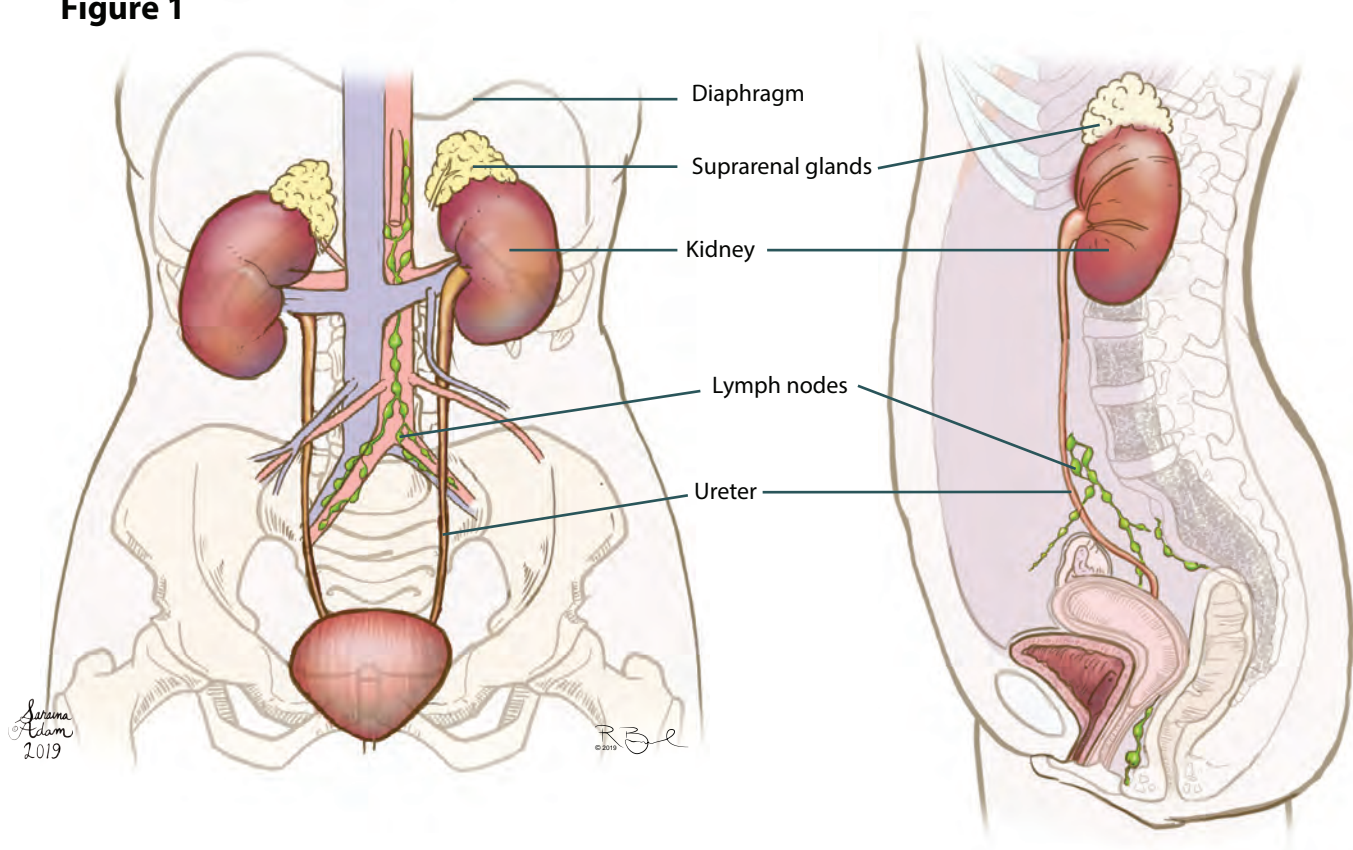
Nephrectomy Information Guide

Open and Robotic

About the Procedure

- Your surgeon has determined that you will need a surgery to remove either a part of, or your whole kidney. The kidneys are paired bean-shaped organs that sit under the diaphragm and filter urine (**Figure 1**).
- A radical nephrectomy is a surgery performed to remove the kidney and surrounding tissues (**Figure 3**), and a partial nephrectomy removes a part of, but not the entire kidney (Figure 4).

Figure 1



What To Expect Before the Procedure

- You will receive a general anesthetic before your surgery, so you will not be awake or feel any pain.
- You may receive a spinal catheter (epidural) through which you will receive pain medication. When you wake up after surgery, this will help to control your pain.

What To Expect During the Procedure

- Depending on the type of surgery that you and your surgeon have determined is appropriate for you, you will either have a single larger incision just below the rib cage, in the middle of the abdomen, or a few small incisions made on the abdomen (**Figure 2**).
- The kidney (**Figure 3**), or a part of the kidney (**Figure 4**) will be removed.
- You will wake up from surgery with a urinary catheter in the bladder, and possibly a second tube or drain in the abdomen. These will likely be removed prior to your discharge from the hospital.

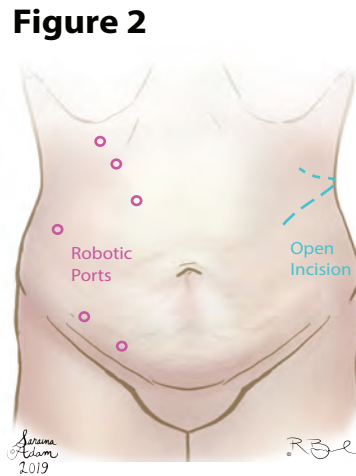


Figure 3

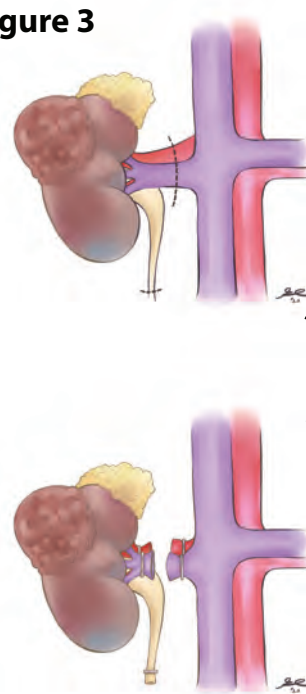
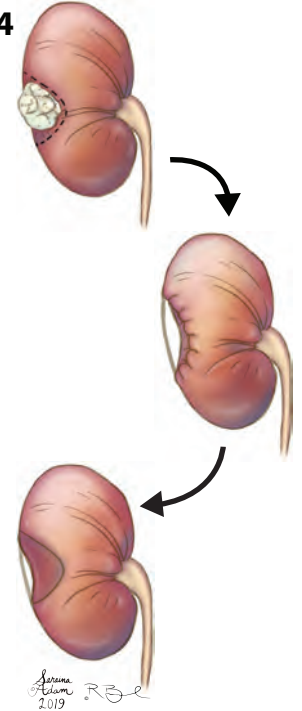


Figure 4



What To Expect After the Procedure

- You will recover in the hospital. Expect to stay at least one night. Many patients are able to go home the day following surgery.
- You may have a pain pump called a patient-controlled analgesia (PCA) device. Your pain medications will initially be given through an IV line. As soon as you are able to tolerate a diet, your pain medication will be given by mouth.
- Anticipate early ambulation after surgery. Your nurse will help you to walk the same day as, or the day after surgery. Walking is very important. If you need additional assistance walking, this can be provided for you.
- You are encouraged to chew gum. You will likely start a diet of clear liquids, and can expect to be eating regular food on the first or second day after surgery. There is no danger to eating regular food after surgery.
- You will have a urinary catheter in your bladder when you wake up, and this will likely be removed the day following surgery.

Discharge

Further instructions will be provided prior to your discharge from the hospital