
University of Illinois Hospital & Health Sciences System
UI-CAN Implementation 2020-2022
Towards Health Equity

Community Program Inventory

UIC College of Medicine

towards
health
equity

UI Health
UIC

 UI Health | 

Dedicated to the pursuit of health equity, UI Health comprises the seven University of Illinois Chicago (UIC) health sciences colleges, the UI Cancer Center, and a health care delivery enterprise including the Hospital and Clinics and the Mile Square Health Center network.

College of Medicine

The poster and dashboard enclosed summarize College of Medicine efforts underway to address the three community health priority areas identified through the 2019 UI-CAN. Programs included were submitted to the SCIP as of December 2020. You may access the 2019 UI-CAN Report at uican.uihealth.care. Community Priority Areas include:

1
Addressing social and structural determinants of health

2
Improving access to care, community resources, and system improvements

3
Primary and secondary prevention of chronic disease

IP
Indicates Interprofessional Program

1. Annual Free Skin Cancer Screening

PROGRAM Detect and treat skin cancers through annual free screening event held through the Department of Dermatology. Patients are informed if additional follow up is needed with a dermatologist and they receive counseling on standards of skin care and skin cancer prevention. In addition, an educational initiative is in development for the community to address disparities in the State of Illinois, with focus on skin health, skin cancer detection and prevention. **PARTNERS** American Academy of Dermatology **CONTACT** Maria Tsoukas; tsoukasm@uic.edu

2. Argentium

PROGRAM Support older adults to remain in their homes through two core programs: Home Care Services and Senior Connections. Home Care Services provides professional employee caregivers at affordable rates. Senior Connections provides trained volunteer visitors to older adults at no cost. Argentium also sponsors community events, new research and common wisdom about the field of aging to enrich the lives of older adults and their families. **PARTNERS** Services for Adults Staying in Their Homes, Chicago Methodist Senior Services **CONTACT** Ben Gerber; bgerber@uic.edu

3. Back to School Health

PROGRAM Provide education and information to connect families to available resources through back-to-school focused community events. UI Health Pediatrics participated in more than 15 events from July - September 2018 and residents and general physicians provided more than 100 free back-to-school physicals at 3 events. **PARTNERS** South Shore Community Health Fair (South Shore), Alderman Cardenas Back to School Health Fair (Little Village), Jericho Walk Health Fair (Englewood), Chicago Urban League Health Fair (Bronzeville), BUILD Health Fair (Austin), Congressman Danny Davis Health Fair (Garfield Park) **CONTACT** Melishia Bansa; bansa@uic.edu

4. Brain Aneurysm Walk

PROGRAM Raise awareness of aneurysms in the community and UI Health as a location for aneurysm treatment and research in treatment through annual solidarity walk in collaboration with the Brain Aneurysm Foundation. **PARTNERS** Brain Aneurysm Foundation **CONTACT** Robert Gottschalk; gottscha@uic.edu

5. CHAMPIONS (Changing Health through Advocacy and eMPloyment In Our Neighborhoods)

PROGRAM A partnership between UI Health and Chicago Public Schools to empower high school students to: 1) identify and help address health priorities of our communities and to 2) volunteer and then apply for job opportunities at UI Health. For six weeks during the summer, high school students participate in a summer internship with training and education in community health. The summer program also provides work experience and prepares students to organize and conduct UI Hospital & Clinics-branded community health activities throughout the school year as one mechanism for UIH to carry out its UI-CAN Implementation Plan. **PARTNERS** Chicago Public Schools Careers and Technical Education Program (CPS CTE), Michael Reese Health Trust, UIC Urban Health Program, UIC Hispanic Center of Excellence **CONTACT** Nasseef Quasim; nquasi2@uic.edu

6. Chicago Street Medicine at UIC

PROGRAM Deliver care on the streets of Chicago to serve the undomiciled population. Services delivered include food and water, wound evaluation and dressing, free medication, preventative health counseling, and transportation to UI Hospital or Clinics if needed. **PARTNERS** Figueroa Wu Family Foundation and the UI Health Pilsen Food Pantry, The Night Ministry, UIC Community Outreach Intervention Project (COIP), South Loop Campus Ministry, The Inclusive Collective (South Loop Community Table) **CONTACT** Joshua Smith; jsmit77@uic.edu

7. COVID-19 Drive Through and Walk Up Testing Center

PROGRAM Provide COVID-19 testing to identify people with COVID-19 so they can quarantine or seek appropriate care with the goal of reducing the spread of the virus. **PARTNERS** Mile Square Health Center **CONTACT** Scott Jones; sejones7@uic.edu

8. COVID-19 Evaluation Clinic, Pilsen

PROGRAM Throughout the COVID-19 pandemic, operate a clinic specifically for patients (adults and pediatrics) with COVID-19 symptoms who need medical evaluation and testing to determine if they are safe to self-isolate at home or if they need emergency care. **PARTNERS** Alderman Byron Sigcho Lopez **CONTACT** Jon Radosta; jrados1@uic.edu

9. Hispanic Center of Excellence: Medicina Academy Apprenticeship Program

PROGRAM Provide an educational pathway into medical school by investing in the preparation of Latino high school students that aspire to become physicians. Participants take part in professional development seminars to raise their awareness of the medical field and participate in hands-on experiences. **PARTNERS** American Heart Association, American Red Cross, Benito Juarez Academy, Illinois Heart Rescue (IHR), Illinois Latino Council on Higher Education (ILACHE), Illinois Student Assistance Commission (ISAC), UIC College Prep High School **CONTACT** Melinda Monge; medacad@uic.edu

10. Office of Healthy Literacy

PROGRAM Promote health literacy, educate students and healthcare providers, and engage diverse socioeconomic communities in conversation surrounding issues related to health literacy and health disparities. **PARTNERS** The National Museum of Mexican Art, UI Cancer Center, Operation Push, West Side United, UIC Department of Pediatrics, Mile Square Health Center

11. Patient-Centered Medicine (PCM) Scholars Program, Service Learning Program (SLP) & Interprofessional Approaches To Health Disparities (IAHD)

PROGRAM Prepare future health professionals to address health disparities across a range of issues and vulnerable populations, including: domestic violence, geriatrics, HIV/AIDS, homelessness, immigrant and refugee health, and incarcerated populations. **PARTNERS** Connections for Abused Women and their Children (CAWC), Project Vida, EdgeAlliance/AIDSCare Progressive Services, Lincoln Park Community Shelter, Cathedral Shelter (now Revive), Housing Opportunities and Maintenance for the Elderly (H.O.M.E.), Heartland Alliance, and Syrian Community Network **CONTACT** Memoona Hasnain; memoona@uic.edu

12. Pilsen Food Pantry

PROGRAM Reduce food insecurity for vulnerable Chicagoans through distributing high quality culturally-appropriate foods. **PARTNERS** Greater Chicago Food Depository, UI Health **CONTACT** Evelyn Figueroa; pilsenfoodpantry.info@gmail.com

13. Primary Care Expansion for People Who Inject Drugs

PROGRAM Reduce harmful consequences of substance use and improve access to healthcare for people who use drugs through primary care services. Services delivered include prevention and treatment for injection-related skin and soft tissue infections, medication-assisted treatment for opioid use disorder, mental health and substance use counseling, management of chronic conditions, prevention and treatment for communicable diseases, and coordinated referrals for specialist care or inpatient treatment at UI Hospital. **PARTNERS** Chicago Department of Public Health (CDPH), UIC School of Public Health, UIC Jane Addams College of Social Work, UIC College of Medicine **CONTACT** Stockton Mayer; smayer75@uic.edu

14. Student Run Free Clinic

PROGRAM Provide access to screening and referrals to UI Health that meets the scheduling, language, and affordability needs of the community. **PARTNERS** UI Hospital and Clinics, Northwestern University, Rush Medical Center **CONTACT** Sondra Summers; sondras@uic.edu

15. UI Health Volunteer Services

PROGRAM Build meaningful connections, caring relationships, and positive engagement between volunteers, patients and families, and promotes the importance of a positive and engaged patient experience. **CONTACT** Kinga Mateja; kmateja@uic.edu

16. UIC Community Outreach Intervention Projects

PROGRAM Address HIV/HCV infection, substance use, and other health disparities in marginalized neighborhoods, conduct research on these health issues, and train UIC students and students from other universities on these issues. **PARTNERS** UI Health Community Clinic Network, Mile Square Health Center, UIC Urban Global Health Program, UIC Center for Dissemination and Implementation Science, UIC Jane Addams College of Social Work **CONTACT** Antonio Jimenez; adj@uic.edu

17. UIC COVID-19 Community Engagement Strike Force

PROGRAM In the short term, address our community organization partners' COVID-19 related needs and align with Mayor Lightfoot's COVID-19 Racial Equity Rapid Response Working Group and Recovery Taskforce. In the long term, create sustainable UIC structures and norms to do community engaged scholarship grounded in community priorities/lived experience, while aiming to address systemic racism and its impact on the health and wellbeing of communities of color, especially among Black communities. **PARTNERS** Many community partners **CONTACT** Jeni Hebert-Beirne; jheber1@uic.edu

18. UICHSC-R Health Careers Pathway Initiative

PROGRAM Offer programs for high school and college students from northern Illinois that will stimulate an interest in health careers and encourage the pursuit of those careers in northern Illinois. **CONTACT** Sam Pope; spope42@uic.edu

19. UIC Open House

PROGRAM Provide students and families visiting UIC an opportunity to speak with selected campus representatives and ask questions, take tours, attend workshops related to fields of study and visit academic, research, and department staff. **PARTNERS** UI Health Volunteer Services, many campus departments **CONTACT** Pilar Carmona; pilarb@uic.edu

20. Urban Medicine Program (UMed)

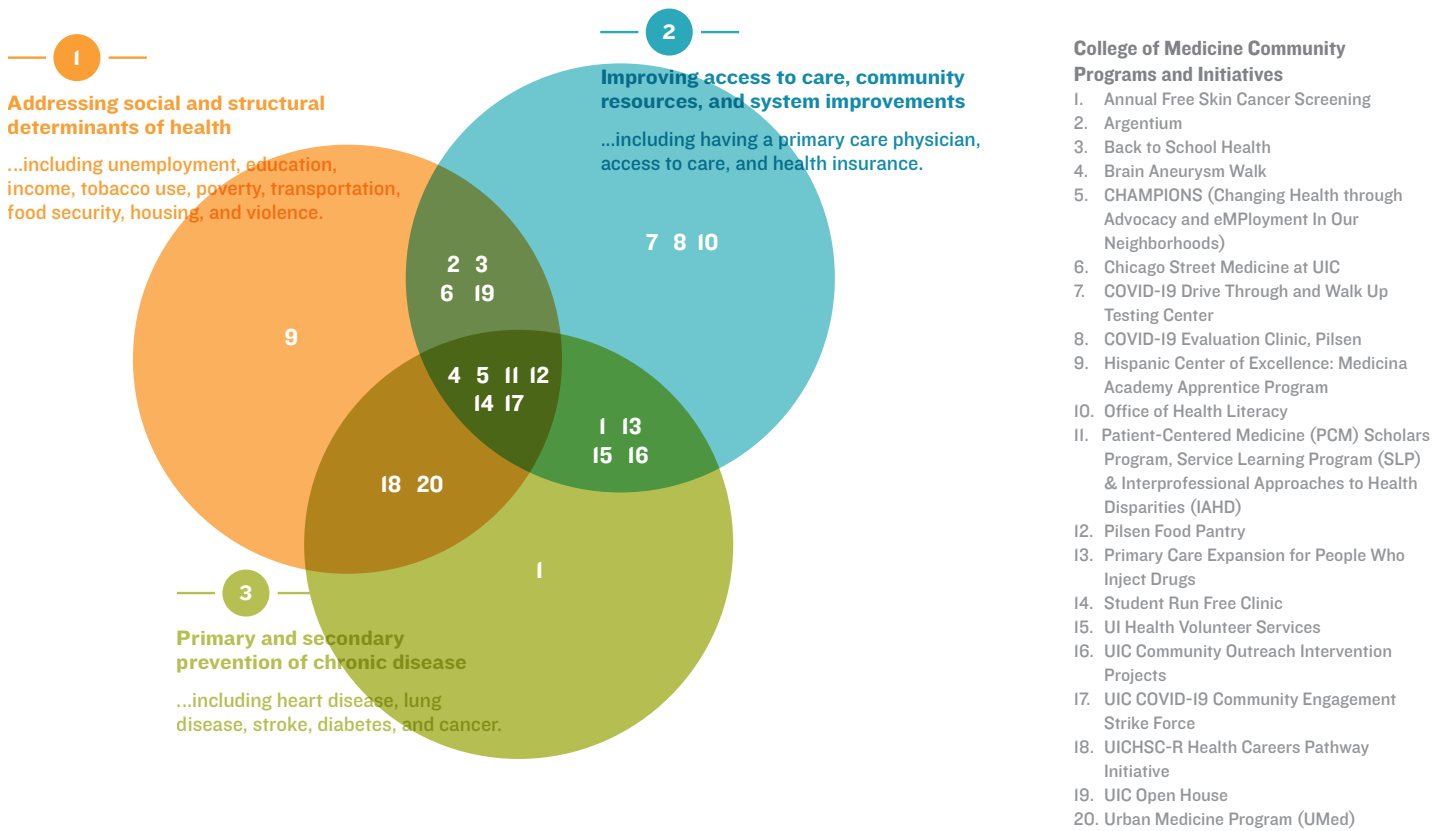
PROGRAM Prepare physician leaders to serve urban underserved communities. Medical students participate in student-led longitudinal service learning initiatives based on the needs expressed by community residents in several underserved neighborhoods in Chicago. Topics include health education for homeless residents, community health worker training, pipeline to health careers for AA and Latino students, food insecurity, and others. **PARTNERS** Deborah's Place Shelter, Lawndale Christian Health Center, CommunityHealth free clinic, Mile Square Health Center-Southshore, UIC Hispanic Center of Excellence, UIC OCEAN-CPHP **CONTACT** Joanna Michel; jmiche3@uic.edu



Add your program or initiative to our growing inventory of UI Health Community Health Programs. Open the camera of your phone to scan this code to link to the Survey of Community Initiatives and Programs (SCIP).

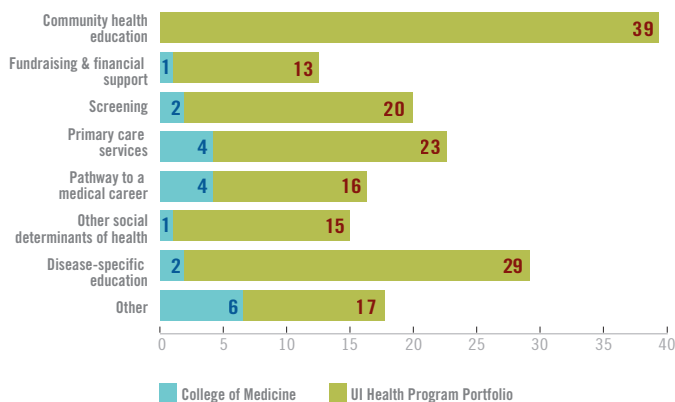
ADDRESSING THE COMMUNITY PRIORITY AREAS

Over the past three Community Health Needs Assessment (CHNA) cycles, UI Health primary service area constituents have expressed consistent priorities. The venn diagram below captures how College of Medicine programs map to the community priority areas.



BENCHMARKING TO THE UI HEALTH PORTFOLIO

The bar chart below plots the College of Medicine programs across the seven program type check boxes in the SCIP. The “other” programs include health literacy education, COVID-19 testing and evaluation, service learning, community-engaged research and infrastructure building.



STEWARDED A NETWORK OF RELATIONSHIPS

Programs take shape and drive impact in the communities served by UI Health through an ecosystem of partnerships. Below we capture the different types of partners supporting and sustaining the program efforts.

