
University of Illinois Hospital & Health Sciences System
UI-CAN Implementation 2020-2022
Towards Health Equity

Community Program Inventory

UIC College of Pharmacy

towards
health
equity

UI Health
UIC



Dedicated to the pursuit of health equity, UI Health comprises the seven University of Illinois Chicago (UIC) health sciences colleges, the UI Cancer Center, and a health care delivery enterprise including the Hospital and Clinics and the Mile Square Health Center network.

College of Pharmacy

The poster and dashboard enclosed summarize College of Pharmacy efforts underway to address the three community health priority areas identified through the 2019 UI-CAN. Programs included were submitted to the SCIP as of November 2020. You may access the 2019 UI-CAN Report at uican.uihealth.care. Community Priority Areas include:

1

Addressing social and structural determinants of health

2

Improving access to care, community resources, and system improvements

3

Primary and secondary prevention of chronic disease

IP

Indicates Interprofessional Program

1. CDoFSS Community Based Health and Wellness

PROGRAM Foster positive health choices through individual consultations, health education talks, health assessments screenings, referrals, and specialized support groups utilizing a Wellness Center Team (nurse-nutritionist-pharmacist). **PARTNERS** Chicago Department of Family Support Services (CDoFSS) - Senior Services, White Crane Wellness Center, Catholic Charities
CONTACT Jewel Sophia-Young; jyoung@uic.edu

2. Chicago Street Medicine at UIC

PROGRAM UIC medical students, residents, and faculty deliver care to the undomiciled population. Services provided include food and water, wound evaluation and dressing, free medication, preventive health counseling, and transportation to UI Hospital and Clinics as needed. **PARTNERS** Figueroa Wu Family Foundation, UI Health Pilsen Food Pantry, The Night Ministry, UIC Community Outreach Intervention Project (COIP), South Loop Campus Ministry, The Inclusive Collective (South Loop Community Table), UIC College of Medicine
CONTACT Joshua Smith; jsmit77@uic.edu

3. Corazon Community Services Health Educaiton

PROGRAM Address a health priority of a community partner through a College of Pharmacy doctoral student service-learning project.
PARTNERS Corazon Community Services
CONTACT Pilar Carmona; pilarb@uic.edu

4. County Fair Blood Pressure Screenings

PROGRAM Expand access to blood pressure screenings, hypertension education, and pharmacists and student pharmacists for members of rural communities. **PARTNERS** Boone County Council on Aging, University of Illinois Extension **CONTACT** Heidi Olson; holson6@uic.edu

5. Discharge Service – Meds to Beds

PROGRAM Improve access to medication, increase medication adherence, and reduce medication related readmissions for heart patients. The service also provides referrals to the Mediation Assistance Program (MAP) for uninsured/underinsured patients.
PARTNERS Medication Assistance Program
CONTACT Keir Mitchell; kringqui@uic.edu

6. Engagell: Enhancement of Geriatric Care for All

PROGRAM Foster campus-community collaborative partnerships to meet the needs of older adults through health fairs, screenings, and medication reviews. **PARTNERS** 69 Senior Centers and Housing Opportunities and Maintenance for the Elderly (H.O.M.E.)
CONTACT Michael Koronkowski; koron@uic.edu

7. Health Education At Cook Co. JTDC

PROGRAM Improve health practices of justice-involved youth through health literacy education programming. **PARTNERS** Staff at Cook County Juvenile Temporary Detention Center, UIC College of Nursing
CONTACT Jennifer Obrecht; jobrecht@uic.edu

8. Patient Access Center

PROGRAM Promote patient access and adherence by bridging the gap between insurance provider, pharmacy and clinic. The Patient Access Center (PAC) is a pharmacy run service that contracts with UI Clinics to coordinate and submit prior authorizations. This streamlined process results in faster turnaround and allows the clinic staff to focus on patient care initiatives. **PARTNERS** UI Clinics.
CONTACT Mike Gannon; mganno2@uic.edu

9. Patient-Centered Medicine (PCM) Scholars Program, Service Learning Program (SLP) & Interprofessional Approaches To Health Disparities (IAHD)

PROGRAM Prepare future health professionals to address health disparities across a range of issues and vulnerable populations, including: domestic violence, geriatrics, HIV/AIDS, homelessness, immigrant and refugee health, and incarcerated populations.
PARTNERS Connections for Abused Women and their Children (CAWC), Project Vida, EdgeAlliance/AIDS Care Progressive Services, Lincoln Park Community Shelter, Cathedral Shelter (now Revive), Housing Opportunities and Maintenance for the Elderly (H.O.M.E.), Heartland Alliance, Syrian Community Network
CONTACT Memoona Hasnain; memoona@uic.edu

10. Pharmacy Learning, Advising, Mentoring, and Engagement for Students (PHLAMES)

PROGRAM Advance the professional and co-curricular development of student pharmacists through health education and promotions events and community service. **PARTNERS** Various non-profit organizations including religious organizations, non-governmental organizations, and community service organizations
CONTACT James Lee; jamlee1@iuc.edu

11. Pharmacist Led HIV Prep - Community Outreach

PROGRAM Increase awareness and uptake of HIV pre-exposure prophylaxis (PrEP) through pharmacist led HIV prevention education. **PARTNERS** UIC Community Outreach Intervention Projects (COIP); UIC Project WISH, UIC Project HEAL, UI Health Community Clinic Network, UIC College of Medicine
CONTACT Sarah Michienzi; msarah@uic.edu

12. PREVENT Pilot

PROGRAM Provide educational programming on influenza and influenza vaccine to underrepresented residents of the South Shore community. Additionally, the PREVENT Pilot also promotes and provides easy access to influenza vaccinations. **PARTNERS** UI Health, South Shore United Methodist Church, South Shore Works, Mobile Care Chicago **CONTACT** Robert DiDomenico; rdidom1@uic.edu

13. Primary Care Expansion for People Who Inject Drugs

PROGRAM In collaboration with UIC Community Outreach Intervention Project (COIP), reduce harmful consequences of substance use and improve access to healthcare for people who use drugs through primary care services. Services delivered include prevention and treatment for injection-related skin and soft tissue infections, medication-assisted treatment for opioid use disorder, mental health and substance use counseling, management of chronic conditions (e.g., diabetes, hypertension), prevention and treatment for communicable diseases (i.e., hepatitis A vaccine, hepatitis C treatment); and coordinated referrals for specialist care or inpatient treatment at UI Hospital. **PARTNERS** Chicago Department of Public Health (CDPH), UIC Community Outreach Intervention Project (COIP), UIC Jane Addams College of Social Work, UIC College of Medicine
CONTACT Stockton Mayer; smayer75@uic.edu

14. Program for Collaborative Research In The Pharmaceutical Sciences (PCRPS)

PROGRAM Inform the public about plants that are used widely for medicinal properties and dietary supplements. **PARTNERS** Atkins Medicinal Plant Garden **CONTACT** Guido Pauli; gfp@uic.edu

15. Riverside Juniors Health Expo

PROGRAM Provide the community with information related to safe and effective medication use and disposal. **PARTNERS** Riverside Juniors Womens Charity **CONTACT** Adam Bursua; abursu1@uic.edu

16. Rural Pharmacy Education (RPHARM) Program

PROGRAM Improve pharmacy services available to people residing in rural communities by preparing student pharmacists to overcome the challenges and meet the needs that are specific to rural communities. **PARTNERS** UIC College of Medicine – Rockford, UIC College of Nursing, Stateline Farm Rescue, Scheidairy Farms, Malcolm Eaton Enterprises, OSF Life Flight, FHN Health System, Green Tree Pharmacy, Gibson Area Hospital & Health Services, NIU Dietetics Intern Program, Rockford Public Schools, Hartig Drug, Stephenson County Health Department **CONTACT** Heidi Olson; holson6@uic.edu

17. The Lab at Assembly of Faith Outreach Center

PROGRAM Expose students (4-14 years old) in a science desert to opportunities to enjoy laboratory science and connect scientific concepts to medicine and health through afterschool programming. **PARTNERS** Assembly of Faith Outreach Center, UIC College of Education, UPharm Program
CONTACT Latoia Gatewood; jlagate@uic.edu

18. UI Health Pharmacy Student Flu Shot Program

PROGRAM Improve student access to flu immunizations and promote herd immunity on the UIC campus. **PARTNERS** UI Health Ambulatory Care Pharmacy Department, UIC College of Pharmacy faculty and student volunteers, CampusCare (University provided student health plan), UIC Wellness Center, UIC Athletic Center
CONTACT Katherine Lee-Mosio; klee5@uic.edu

19. UI Health Specialty Pharmacy Services

PROGRAM Help people with complex or chronic disease reach the best health by providing safe, affordable access to specialty drugs. Address affordability barriers including high out-of-pocket costs and insurance challenges, and, address high-touch service needs such as self-injection training, storage and refrigeration, supplies, and adverse interaction effects. **PARTNERS** Webber Logistics (home delivery service), UI Outpatient Clinics, UI Cancer Center, UI Medication Assistance Program, Chicago Rx Discount Card, GoodRx Patient Discount Card, Patient Assistance Grant, Copay Coupon (various pharmaceutical manufacturers), Healthwell
CONTACT Michael Gannon; mganno2@uic.edu

20. UI Health Volunteer Services

PROGRAM Build meaningful connections, caring relationships, and positive engagement between volunteers, patients and families. Promote the importance of a positive and engaged patient experience.
CONTACT Kinga Mateja; kmateja@uic.edu

21. UI Team RX

PROGRAM Improve medication safety, adherence and optimize healthcare costs. **CONTACT** Anitha Nagelli; anagel1@uic.edu

22. UIC College of Pharmacy - Community Drug Education Committee (CDEC)

PROGRAM Provide health education to Chicago youth on topics such as opioid awareness, domestic violence, STD awareness, handwashing, nutrition, and pathways to health professions.
CONTACT Leslie Briars; las@uic.edu

23. UIC Community Outreach Intervention Projects (COIP)

PROGRAM Address HIV/HCV infection, substance use, and other health disparities in marginalized neighborhoods, conduct research on these health issues, and train UIC students and students from other universities on these issues. **PARTNERS** UI Health Community Clinic Network, Mile Square Health Center, UIC Urban Global Health Program, UIC Center for Dissemination and Implementation Science, UIC Jane Addams College of Social Work
CONTACT Antonio Jimenez; adj@uic.edu

24. UIC Open House

PROGRAM Provide students and families visiting UIC an opportunity to speak with selected campus representatives and ask questions, take tours, attend workshops related to fields of study, and visit academic, research, and department staff. **PARTNERS** UI Health Volunteer Services, many campus departments
CONTACT Pilar Carmona; pilarb@uic.edu

25. Urban Pharmacy (UPHARM) Program

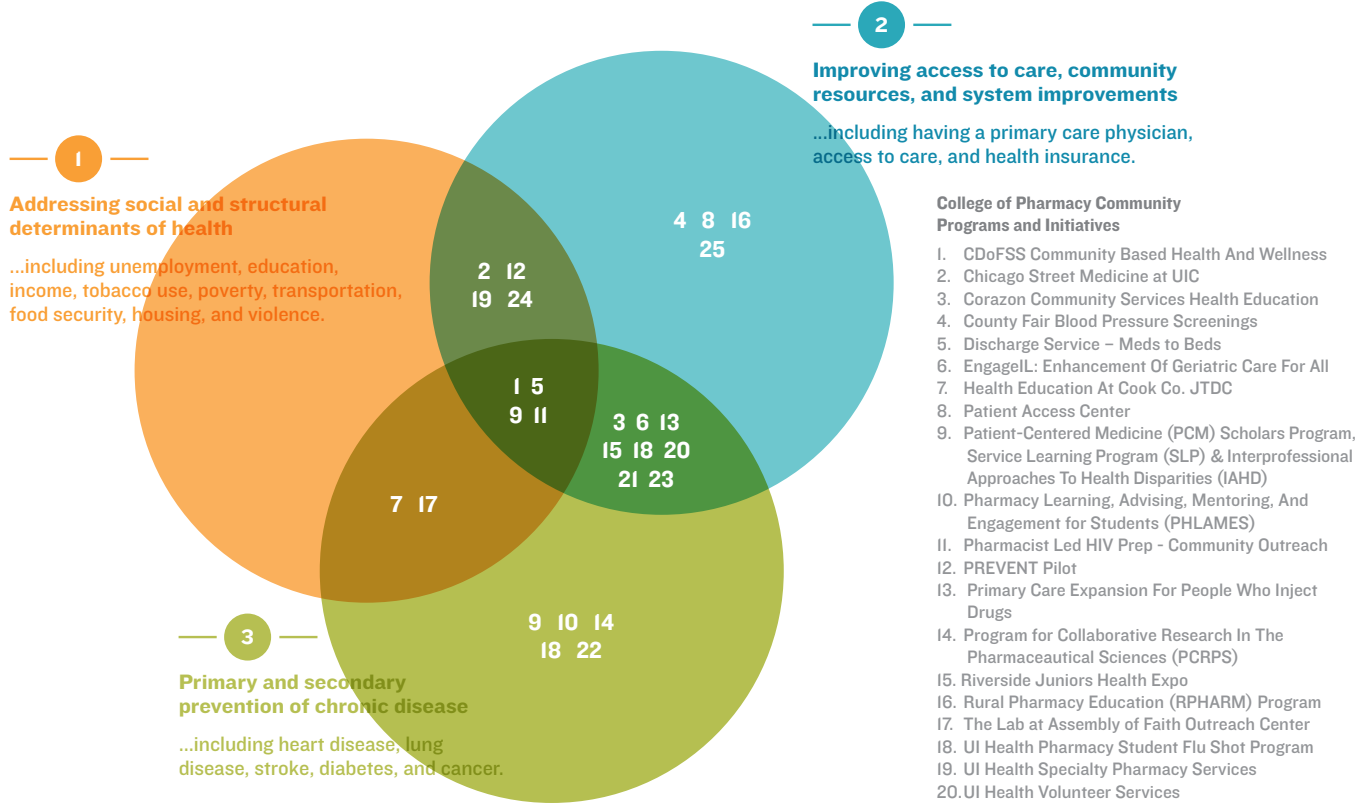
PROGRAM Prepare pharmacy leaders who will serve urban communities and increase health care/pharmacist resources and capacity building for the city of Chicago. **PARTNERS** Midwest Asian Health Association, MAHA Clinic, Chicago Hispanic Health Coalition, Chicago South and West Side Community Advocacy Group, UI Health Community Relations (Pilar Carmona), West Humboldt Park Mile Square Health Center **CONTACT** Clara Okorie-Awe; awe@uic.edu



Add your program or initiative to our growing inventory of UI Health Community Health Programs. Open the camera of your phone to scan this code to link to the Survey of Community Initiatives and Programs (SCIP).

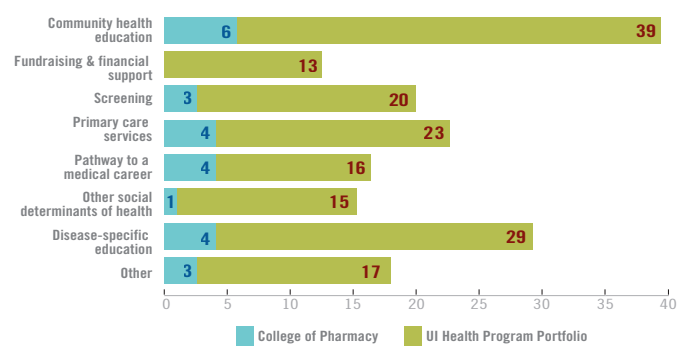
ADDRESSING THE COMMUNITY PRIORITY AREAS

Over the past three Community Health Needs Assessment (CHNA) cycles, UI Health primary service area constituents have expressed consistent priorities. The venn diagram below captures how College of Pharmacy programs map to the community priority areas.



BENCHMARKING TO THE UI HEALTH PORTFOLIO

The bar chart below plots the College of Pharmacy programs across the seven program type check boxes in the SCIP. The “other” programs include specialty pharmacy services and a hybrid of community health education, screening, and disease specific education.



STEWARDED A NETWORK OF RELATIONSHIPS

Programs take shape and drive impact in the communities served by UI Health through an ecosystem of partnerships. Below we capture the different types of partners supporting and sustaining the program efforts.

